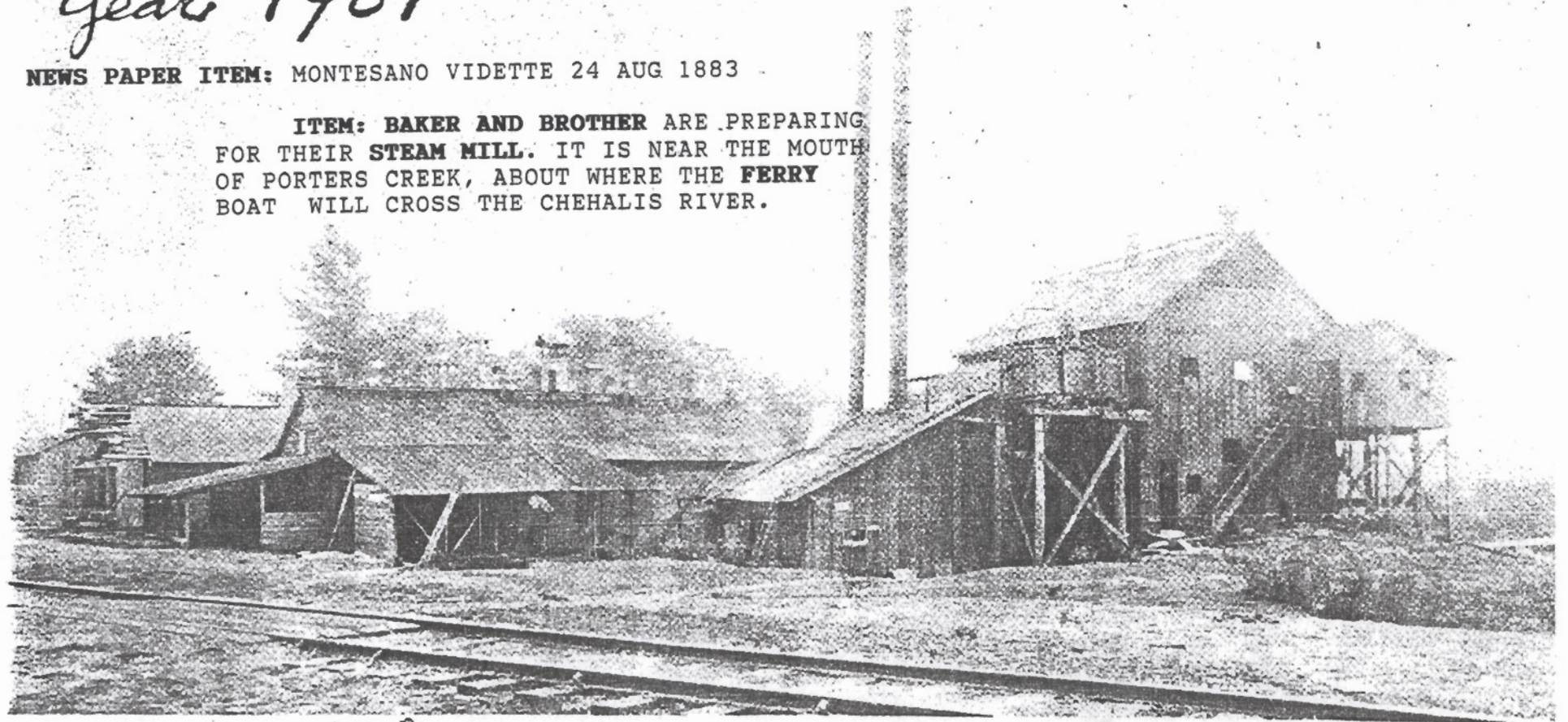


Emerson + Butler shingle mill
Porter - Wash
Year 1901

NEWS PAPER ITEM: MONTESANO VIDETTE 24 AUG 1883

ITEM: BAKER AND BROTHER ARE PREPARING FOR THEIR STEAM MILL. IT IS NEAR THE MOUTH OF PORTERS CREEK, ABOUT WHERE THE FERRY BOAT WILL CROSS THE CHEHALIS RIVER.



5-3-81

Shingle mill in Porter, 1901

The Emerson and Butler shingle mill was a going concern in Porter when this picture was taken on a hazy day in 1901. One of the owners, James L. Emerson, was killed in a logging accident

the following year when he drowned in the Chehalis River. His granddaughter, Jean Lee of Menlo, owns the picture.