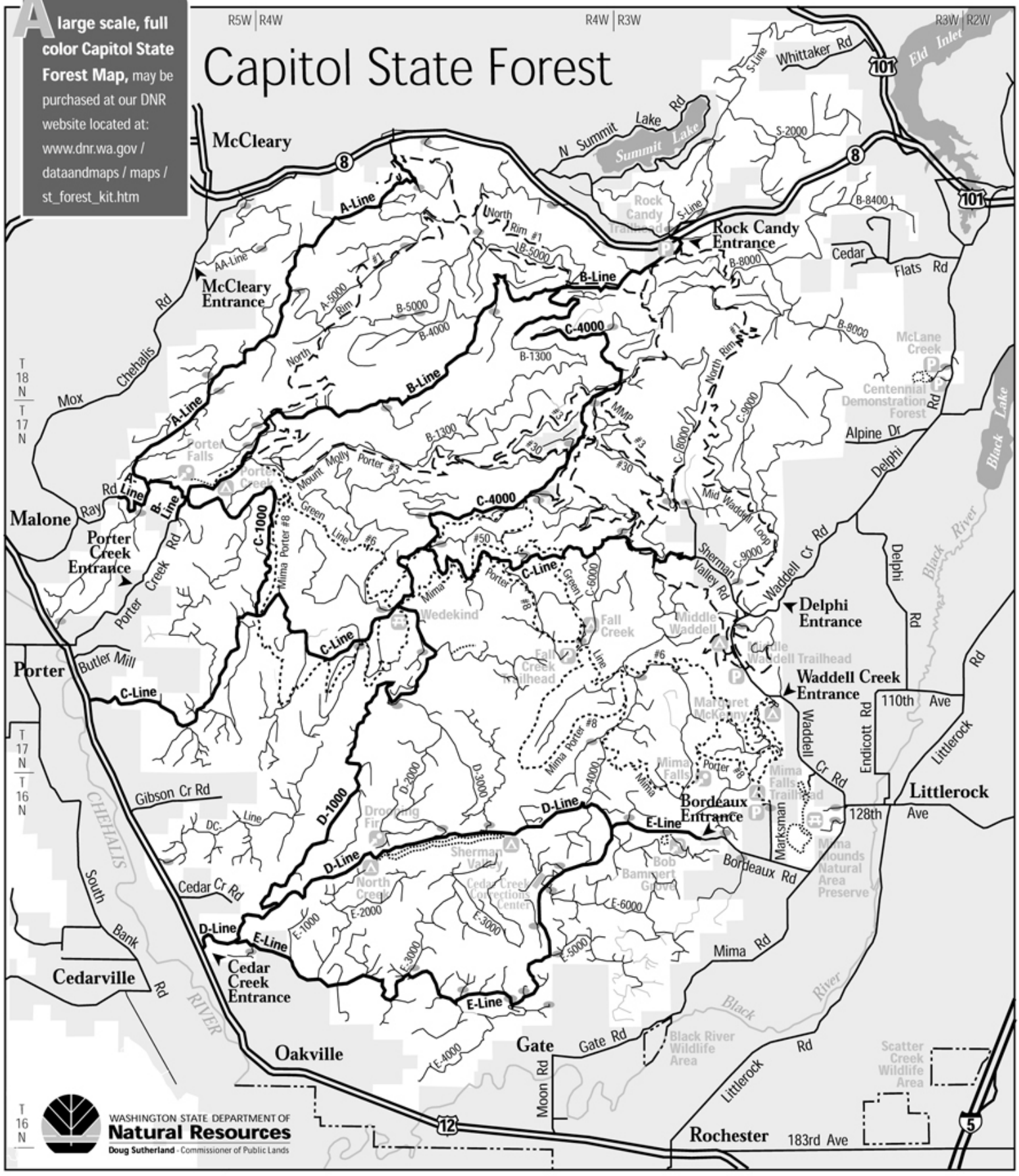


A large scale, full color Capitol State Forest Map, may be purchased at our DNR website located at: [www.dnr.wa.gov / dataandmaps / maps / st_forest_kit.htm](http://www.dnr.wa.gov/dataandmaps/maps/st_forest_kit.htm)

Capitol State Forest



LEGEND

0 1 2 3 miles

- Major Highway
- County or City Rd
- Primary Forest Rd
- Secondary Forest Rd
- Motorbike/Mtn Bike/Hiker Trail
- Horse/Mtn Bike/Hiker Trail
- Hiker Only Trail
- Campground
- Picnic Site
- Parking or Trailhead
- Point of Interest
- Gate

Rules to remember

On the Roads

- || CAUTION: Few roads are paved and all have soft shoulders.
- || Logging trucks, heavy equipment, and other vehicles use these roads. Be ready to yield the right-of-way.
- || DRIVE WITH CAUTION. On forest management roads, keep speed under 25 mph.
- || Speed limit in camp and picnic sites is 5 mph.
- || Please do not litter.
- || Motorcycles, horses, and mountain bikes are allowed behind gated roads shown on this map *unless* roads are posted or abandoned.

On the Trails

- || Stay on signed, approved trails.
- || Unsigned trails are CLOSED.

- || Respect the rights of others on trails.
- || Do not ride in streams or on road berms.
- || Watch for unmarked hazards on trails.
- || Off-road vehicles (ORV) must have vehicle license or ORV permit tag, and U.S. Forest Service-approved spark arrestor.
- || Trails are closed to ORVs and horses, Dec. 1 to April 30.

In the Campsites

- || Respect sites designed for people with disabilities.

- || Camp only in designated campgrounds and campsites open May 1 - Nov 30.
- || Do not alter or remove vegetation.
- || Limit fires to campsite fireplaces.
- || Do not burn pallets or treated wood.
- || Maintain quiet from 10 p.m. to 6 a.m.
- || Do not shoot in or near recreation sites, trails, or roads. Check for hikers or other quiet users.
- || ORV use not permitted in campgrounds.
- || Use of fireworks is strictly prohibited.
- || Campsites are available first-come, first-served. No reservations.
- || Limit stay to 7 days per calendar year.

